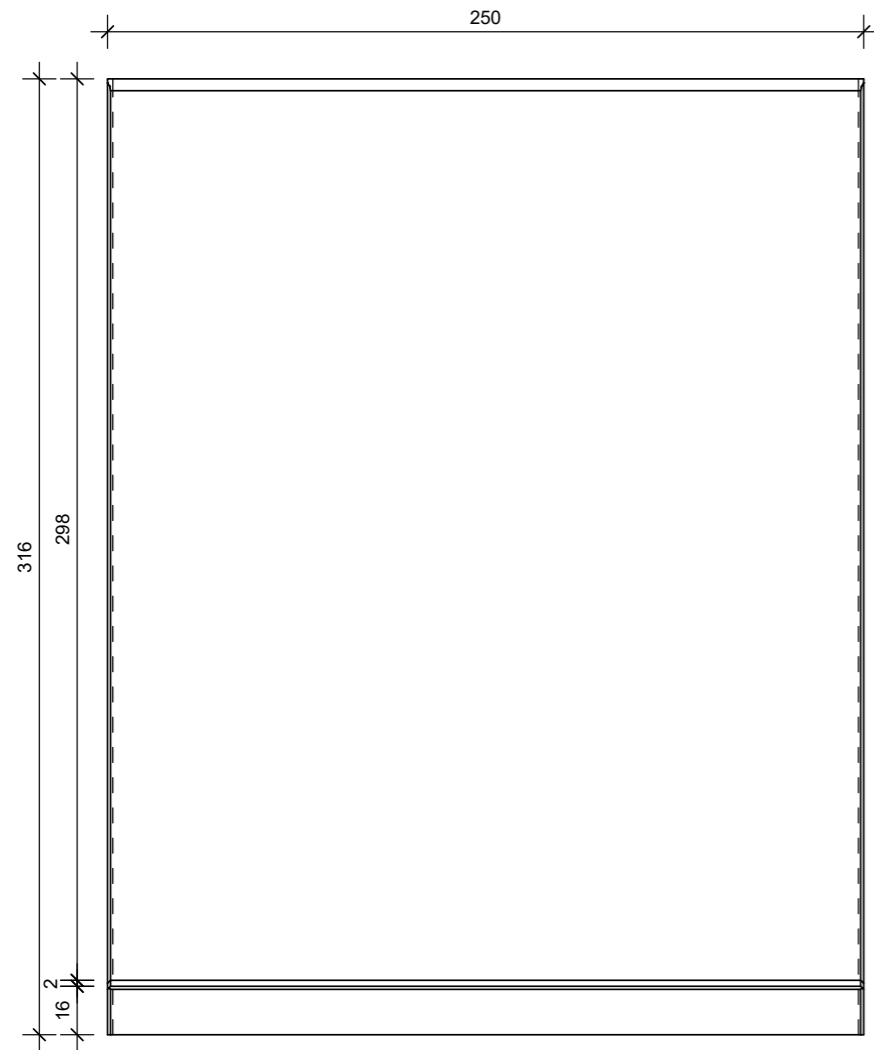
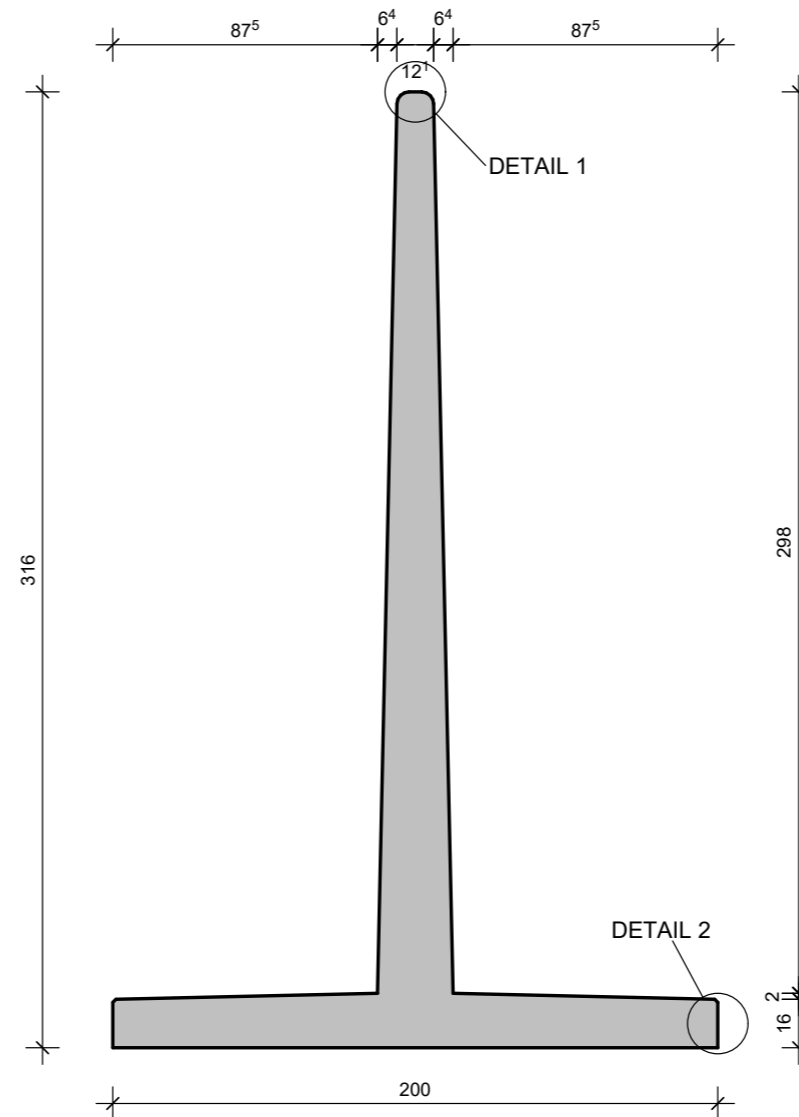


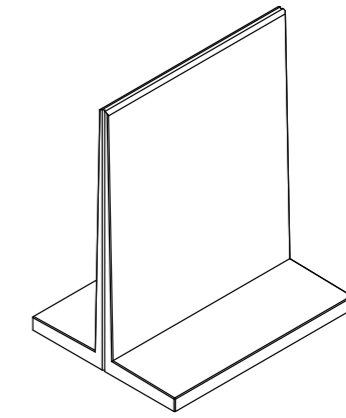
VOORAANZICHT - VUE FRONTALE
VORDERANSICHT - FRONT VIEW



DOORSNEDE - COUPE TRANSVERSALE
QUERSCHNITT - CROSS SECTION



3D



TECHNISCHE FICHE / FICHE TECHNIQUE
TECHNISCHE DATEN / TECHNICAL DATA

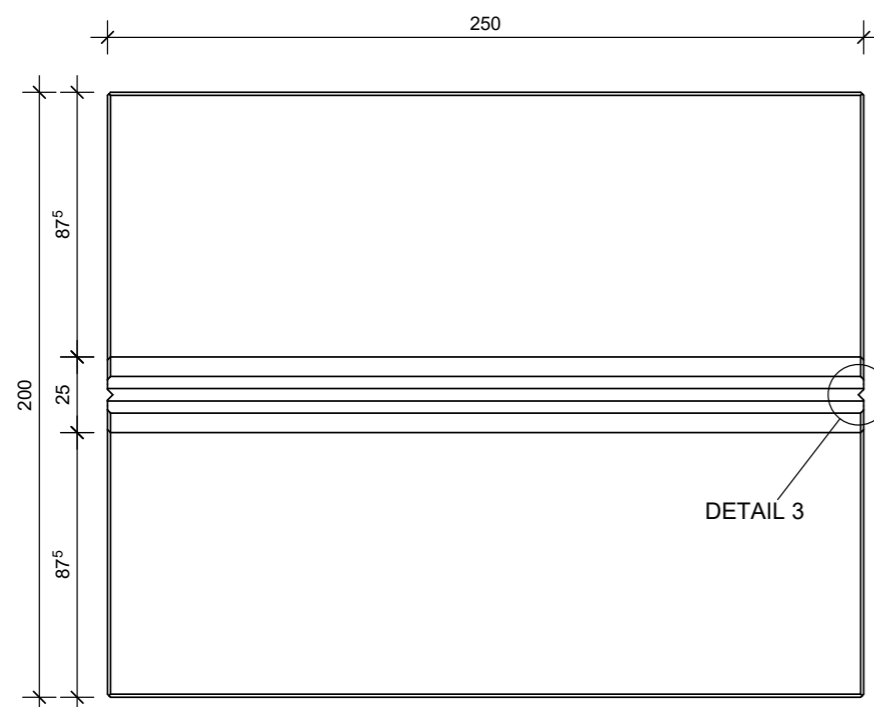
element / élément / Element / element

CTAGRI 316x250

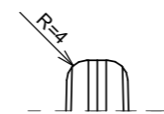
sterkteklasse / classe de résistance Festigkeitsklasse / strength class	C60/75	artikelnr. / numéro d'article Article nr. / item number	10383
sterkte bij levering / résistance lors de la livraison Festigkeit bei Lieferung / strength at delivery	/	versie / version Version / version	20170807
betondekking / enrobage de béton Betondeckung / concrete cover	30mm	productie / production Herstellung / production	Wielsbeke
milieuklasse / classe d'exposition Expositionsklasse / exposure class (EN 206)	XC4, XF1, XA3	volumen / volume Volumen / volume	2.22 m ³
omgevingsklasse / classe d'environnement Umgebungs-kategorie / environmental class (NEN B15-001)	EA3, EE3	gewicht / poids Gewicht / weight	5458 kg
staalqualiteit / qualité de l'acier Stahlqualität / steel quality	DE500BS	ankers / ancrés Anker / anchors	RTA: / KKA: /

aslast / charge à l'essieu Achslast / axle load	10 Ton	randafstand / distance de bord Randabstand / safety distance (cm)	R1: 0.40 R2: 1.30	spoorbreedte / largeur de voie Spurweite / track width ≥ 2.00m
aslast / charge à l'essieu Achslast / axle load	15 Ton	randafstand / distance de bord Randabstand / safety distance (cm)	R1: 0.60 R2: 2.10	spoorbreedte / largeur de voie Spurweite / track width ≥ 2.00m

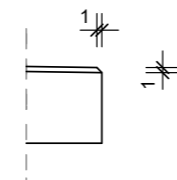
BOVENAANZICHT - VUE SUPERIEURE
DRAUFSICHT - TOP VIEW



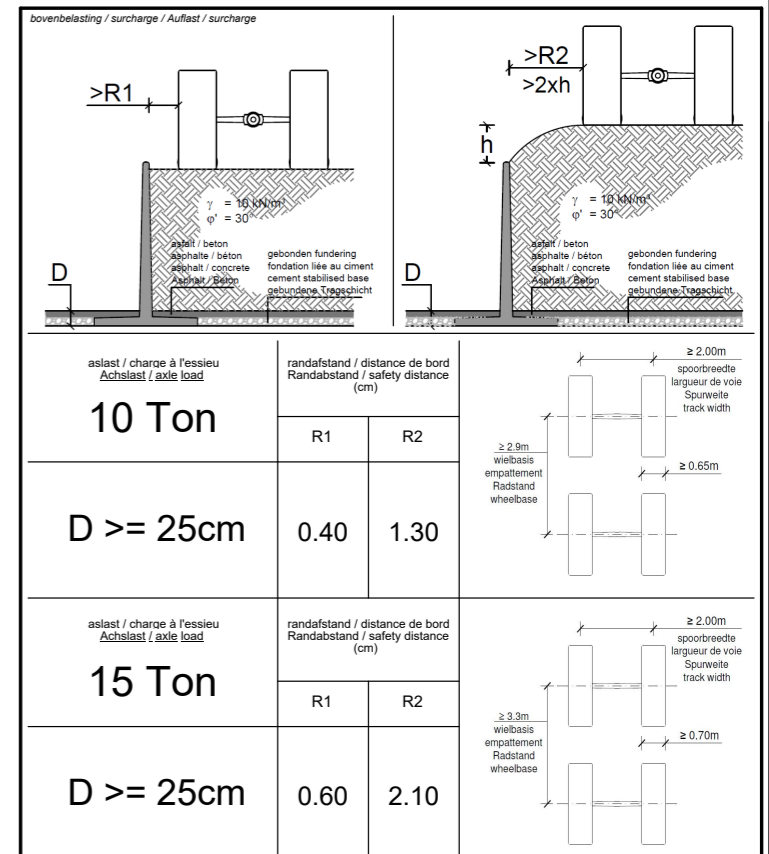
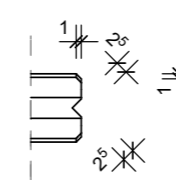
DETAIL 1



DETAIL 2



DETAIL 3



CBS BETON NV
Hooiermeersstraat 8
B-8710 Wielsbeke
Tel. +32 56 61 75 37
Fax +32 56 61 75 39
info@cbs-beton.com
www.cbs-beton.com