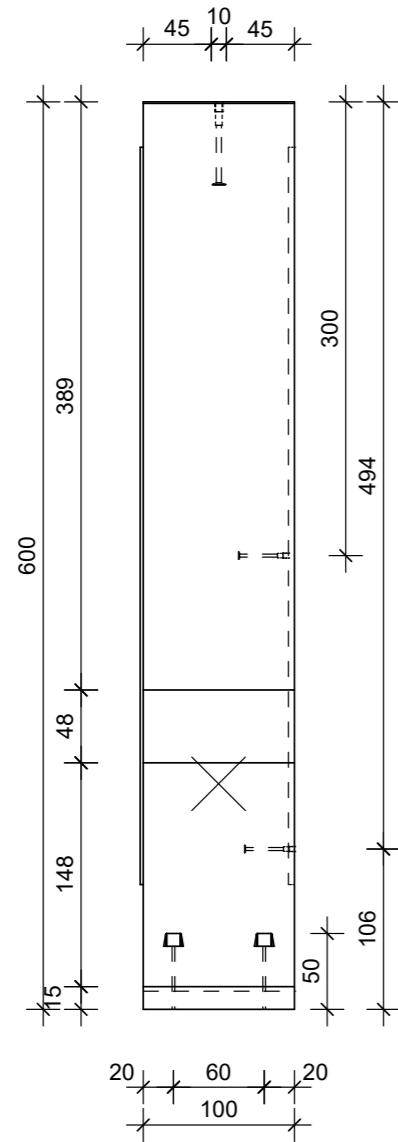
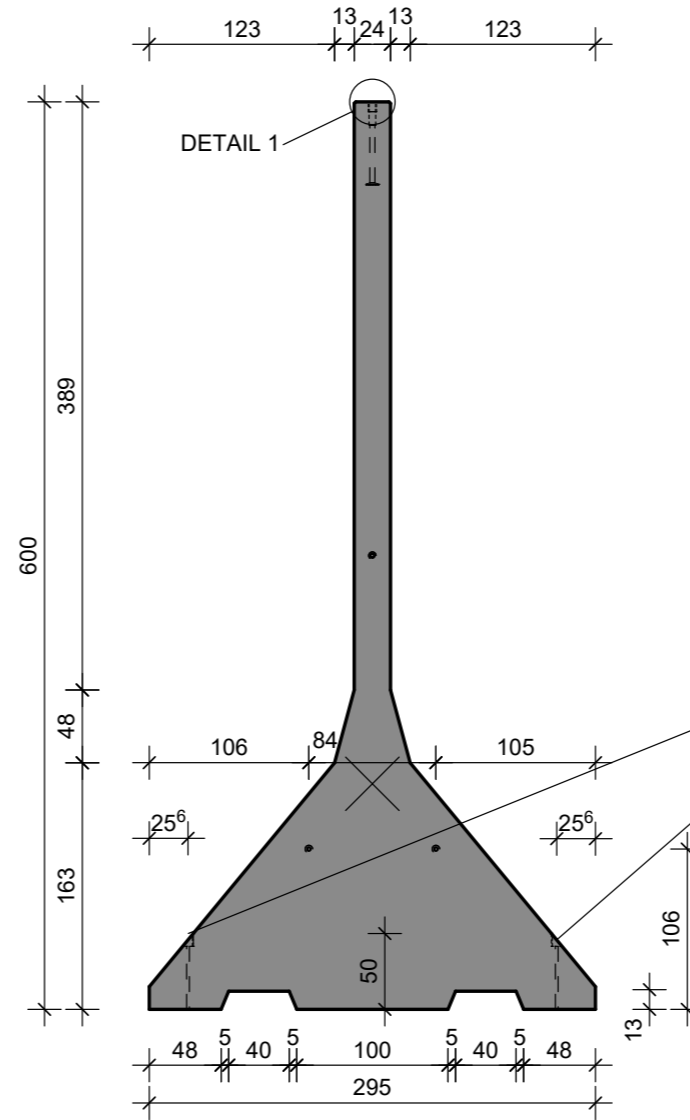


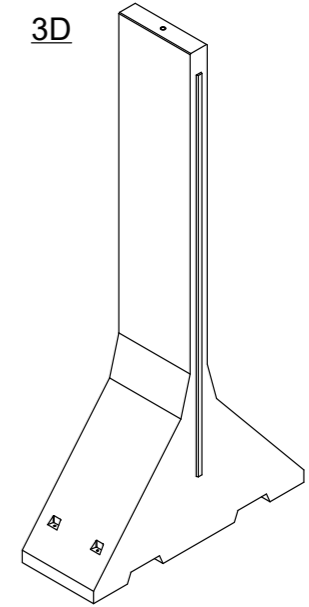
VOORAANZICHT - VUE FRONTALE  
VORDERANSICHT - FRONT VIEW



DOORSNEDE - COUPE TRANSVERSALE  
QUERSCHNITT - CROSS SECTION



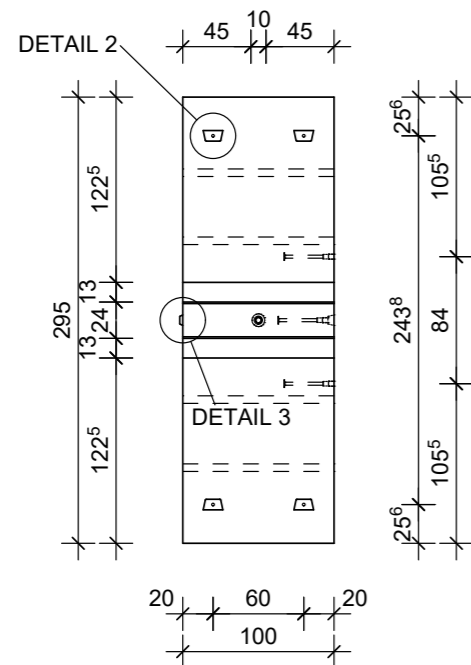
3D



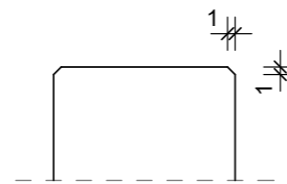
TE INSTALLEREN MET FIXING KIT (ARTIKEL 12219)  
A INSTALLER AVEC KIT DE FIXATION (ARTICLE 12219)  
INSTALLIERUNG MIT FIXING KIT (ARTIKEL 12219)  
USE FIXING KIT FOR INSTALLATION (ITEM 12219)



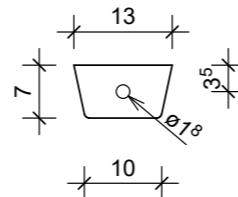
BOVENAANZICHT - VUE SUPERIEURE  
DRAUFSICHT - TOP VIEW



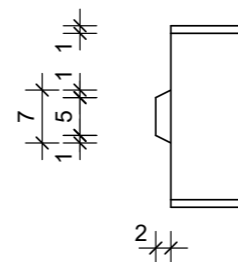
DETAIL 1



DETAIL 2



DETAIL 3



TECHNISCHE FICHE / FICHE TECHNIQUE  
TECHNISCHE DATEN / TECHNICAL DATA

CTGRA 600x100

sterkteklasse / classe de résistance Festigkeitsklasse / strength class	C60/75	artikelnr. / numéro d'article Article nr. / item number	11844
constructieklasse / classe structurale Bauklasse / structural class	S1	versie / version Version / version	20190716
betondekking / enrobage de béton Betondeckung / concrete cover	30mm	productie / production Herstellung / production	Wielsbeke
milieuklasse / classe d'exposition Expositionssklasse / exposure class (EN 206)	B / NL: XC4, XD3, XS3, XF4* F / UK: XC4, XD1, XS1, XF3* D: XC4, XF3*	volume / volume Volumen / volume	3.9917 m <sup>3</sup>
omgevingsklasse / classe d'environnement Umgebungsklasse / environmental class (NBN B15-001)	EE4/ES4*	gewicht / poids Gewicht / weight	9520 kg
staalkwaliteit / qualité de l'acier Stahlgüte / steel quality	B500B*	ankers / ancrés Anker / anchors	HBS: 3X Mrd 24-325 zonder wapening HBS: 1X Mrd 42
toelaatbare maatafwijking / écart dimensionnel admissible zulässige Maßabweichung / allowable dimensional deviation	+5mm/-5mm	nijshaken / anneaux de levage Kupplungen / lifting links	3x HEFH HBS Mrd24 zonder wapening 1x HEFH HBS Mrd42
stortzijde / côté coulage Gussseite / casting side	glad / lisse glatter / smooth	betonafmetingen / dimensions de béton Betonabmessungen / concrete dimensions	cm
andere afmetingen / autres dimensions andere Abmessungen / other dimensions			mm

andere klassen op aanvraag / autres classes sur demande / other classes on request / andere Klassen auf Anfrage  
bovenbelasting / surcharge / Auflast / surcharge

